





Freestanding ADU

800 sf | 2 Bedrooms | 1 Baths

Home Features:

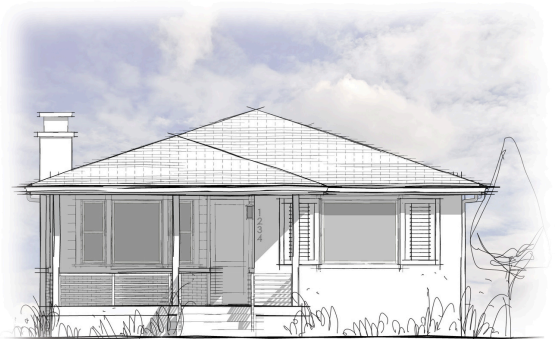
-  Single-story open floor plan
-  Layout maximizes the space and natural light
-  Full galley kitchen
-  In-unit washer/ dryer



www.genesisbuildersla.com



Mediterranean Revival



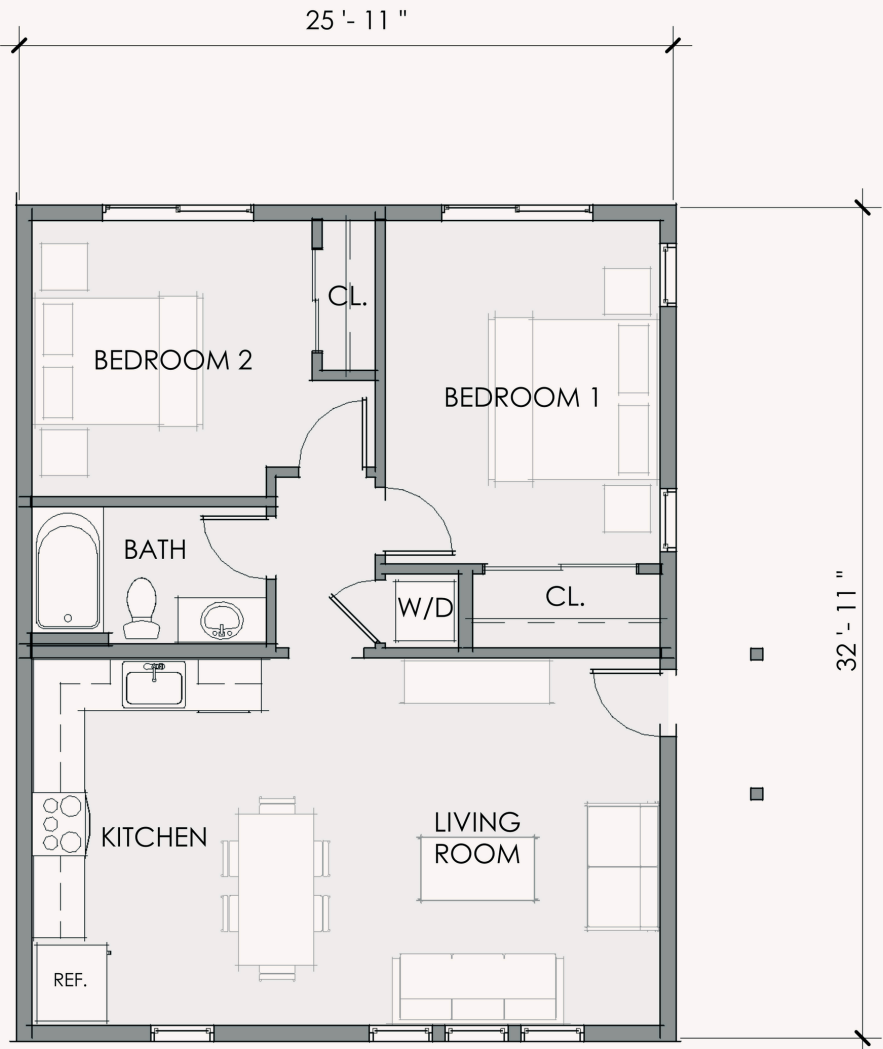
SoCal Traditional



Foothill Craftsman



California Bungalow



Room size, walls, windows, doors, porches, decks, ceiling height vary per home location and elevation.
Plans subject to change without notice.





Genesis Builders homes meet the Los Angeles County Residential Design Standards (RDS) Ordinance and satisfy The Altadena Community Standards District requirements.

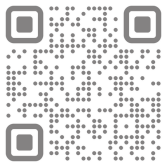
Genesis Builders Inc operates under the Montage Development Inc. CSLB #738938.
Expires on August 31, 2025.

Upper ADU

800 sf | 2 Bedrooms | 1 Baths

Home Features:

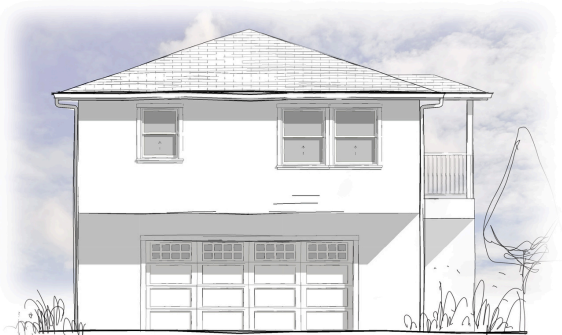
-  Open floor plan ADU, above a two car garage
-  Layout maximizes the space and natural light
-  Full galley kitchen
-  In-unit washer/ dryer



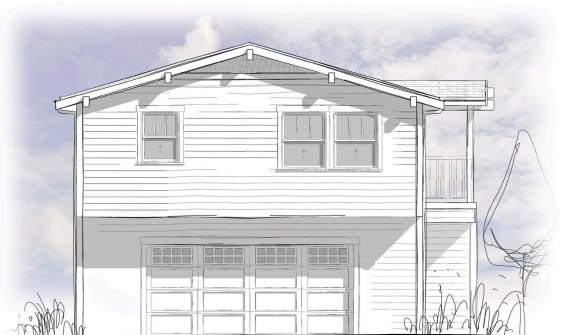
www.genesisbuildersla.com



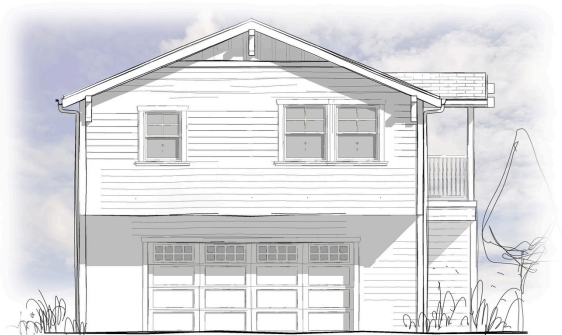
Mediterranean Revival



SoCal Traditional

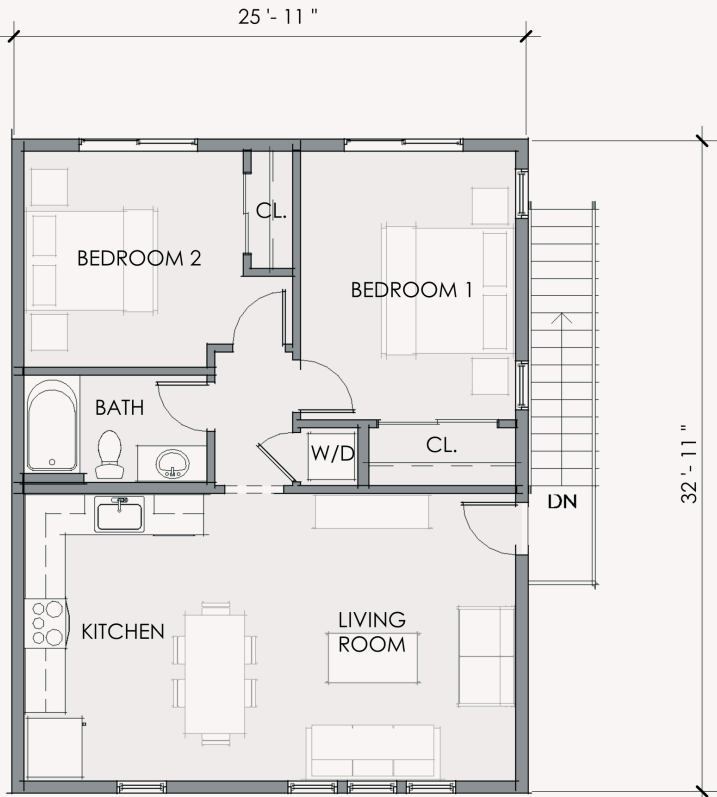


Foothill Craftsman

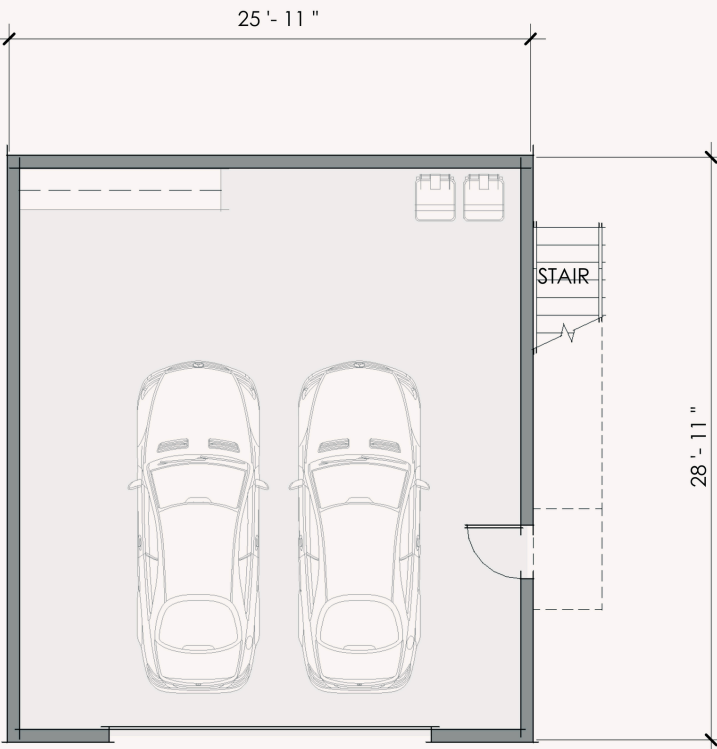


California Bungalow

L2.



L1.



Room size, walls, windows, doors, porches, decks, ceiling height vary per home location and elevation.
Plans subject to change without notice.

Genesis Builders homes meet the Los Angeles County Residential Design Standards (RDS) Ordinance and satisfy The Altadena Community Standards District requirements.

Genesis Builders Inc operates under the Montage Development Inc. CSLB #738938.
Expires on August 31, 2025.