

# Freestanding ADU

800 sf | 2 Bedrooms | 1 Baths

## Home Features:



Single-story open floor plan



Layout maximizes the space and natural light



Full galley kitchen



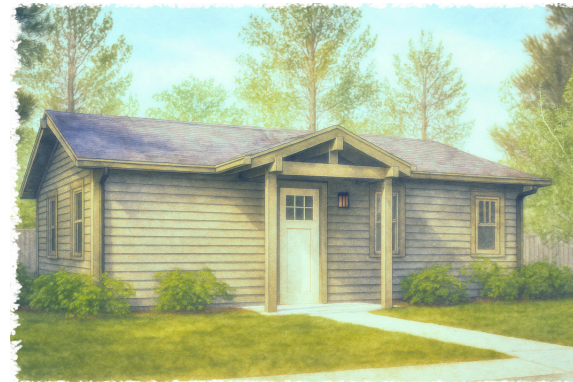
In-unit washer/ dryer



Mediterranean Revival



SoCal Traditional



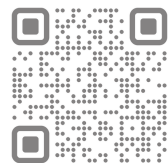
Foothill Craftsman



California Bungalow



Room size, walls, windows, doors, porches, decks, ceiling height vary per home location and elevation. Plans subject to change without notice. Genesis Builders homes meet the Los Angeles County Residential Design Standards (RDS) Ordinance and satisfy The Altadena Community Standards District requirements. Genesis Builders Inc operates under the Montage Development Inc. CSLB #738938.







[www.genesisbuildersla.com](http://www.genesisbuildersla.com)

# Upper ADU

800 sf | 2 Bedrooms | 1 Baths

## Home Features:

-  Open floor plan ADU, above a two car garage
-  Layout maximizes the space and natural light
-  Full galley kitchen
-  In-unit washer/ dryer



Mediterranean Revival



SoCal Traditional

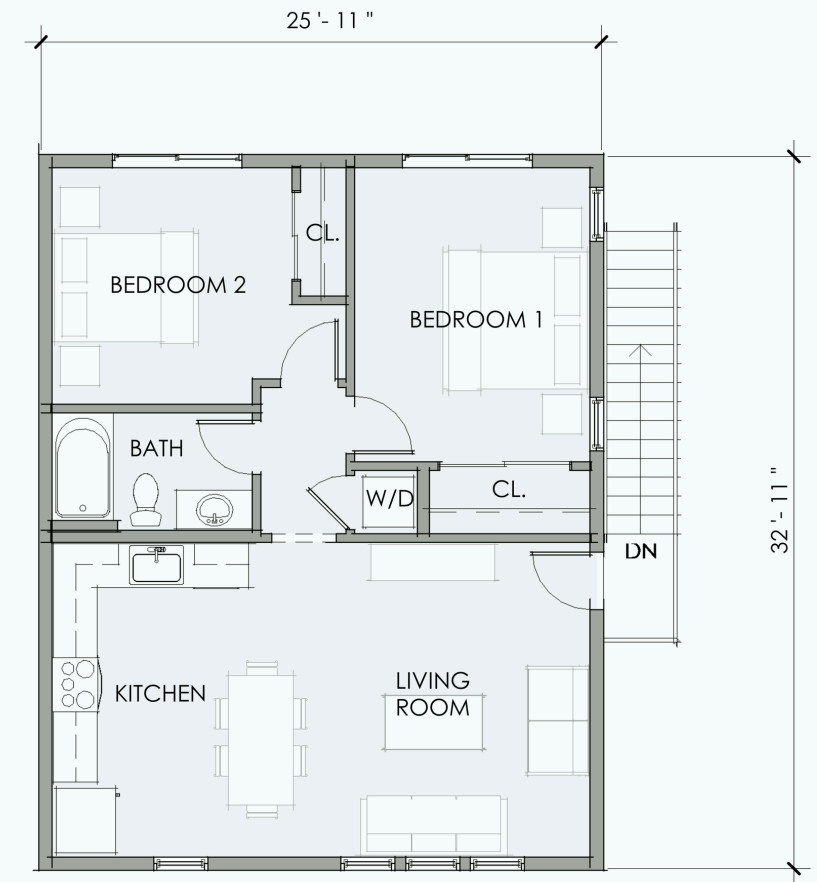


Foothill Craftsman

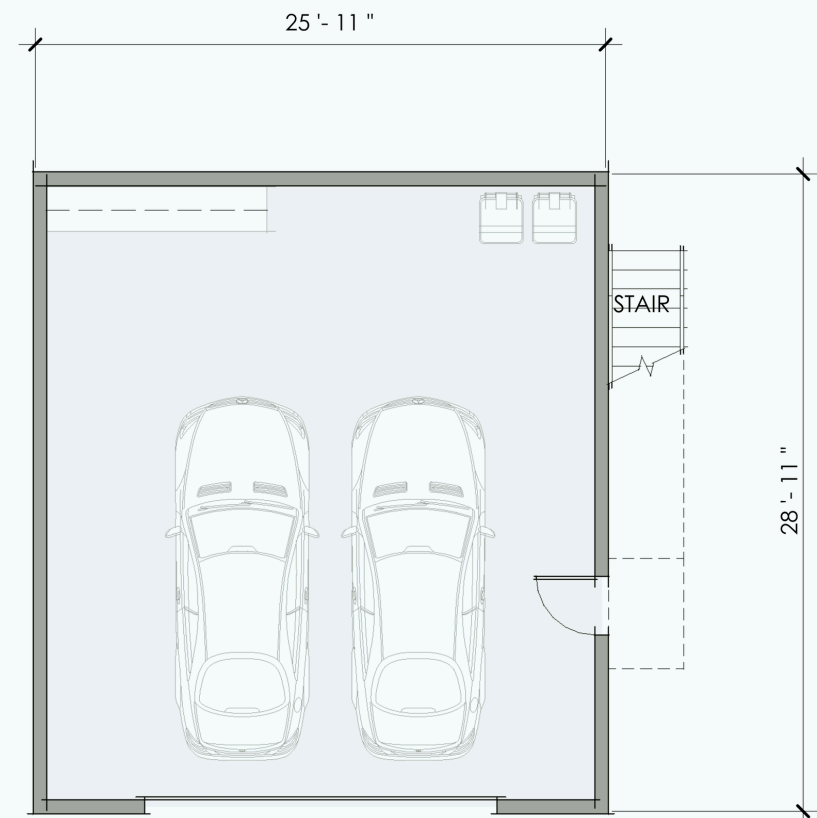


California Bungalow

L2.



L1.



Room size, walls, windows, doors, porches, decks, ceiling height vary per home location and elevation. Plans subject to change without notice. Genesis Builders homes meet the Los Angeles County Residential Design Standards (RDS) Ordinance and satisfy The Altadena Community Standards District requirements. Genesis Builders Inc operates under the Montage Development Inc. CSLB #738938.

