










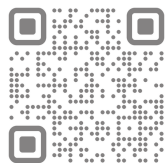


# Residence 1

1250 sf | 3 Bedrooms | 2 Baths

## Home Features:

-  Single-story open floor plan
-  Vaulted ceiling in living room
-  Kitchen with pantry, desk, and island with counter seating
-  Spacious laundry room
-  Closets throughout the home for additional storage
-  Primary bedroom with ensuite bathroom and walk-in closet
-  Large front porch
-  Detached two-car garage (not shown on plan)
-  Optional fireplace
-  Optional private deck from primary bedroom
-  Optional Accessory Dwelling Unit (not shown on plan)



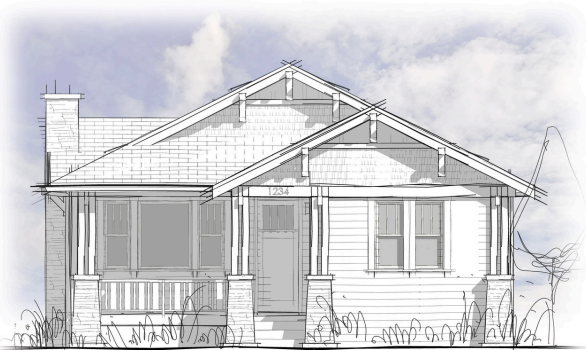
www.genesisbuildersla.com



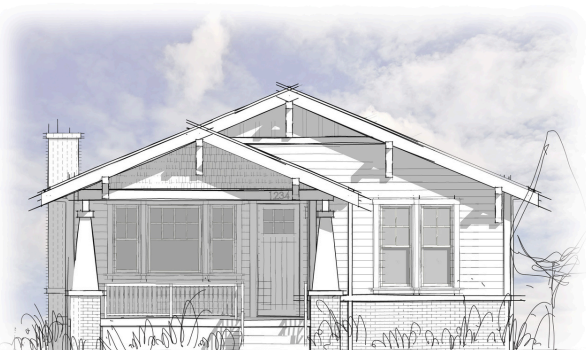
Mediterranean Revival



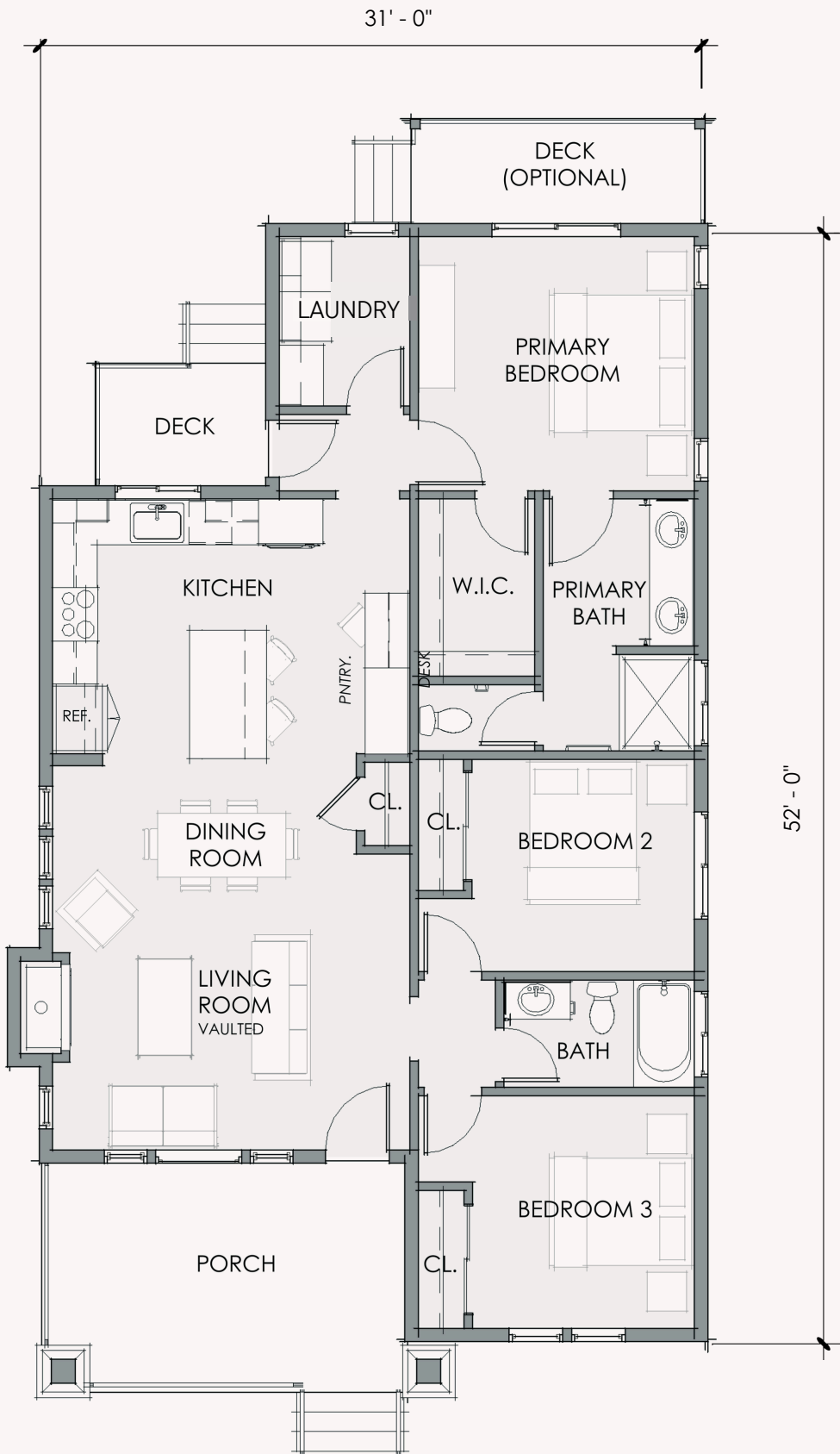
SoCal Traditional



Foothill Craftsman



California Bungalow



Room size, walls, windows, doors, porches, decks, ceiling height vary per home location and elevation.  
Plans subject to change without notice.












Genesis Builders homes meet the Los Angeles County Residential Design Standards (RDS) Ordinance and satisfy The Altadena Community Standards District requirements.

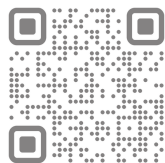
Genesis Builders Inc operates under the Montage Development Inc. CSLB #738938.  
Expires on August 31, 2025.

# Residence 2

1500 sf | 3 Bedrooms | 2.5 Baths

### Home Features:

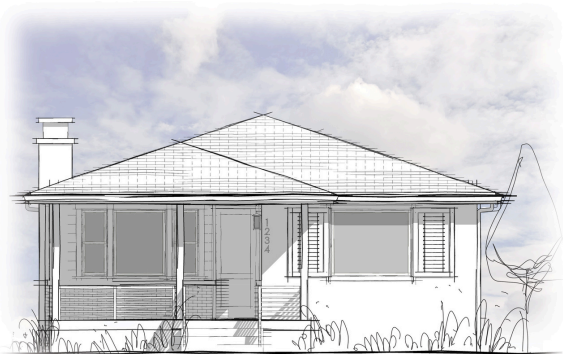
-  Single-story open floor plan
-  Vaulted ceiling in living room
-  Kitchen with pantry and island with counter seating
-  Spacious laundry room
-  Closets throughout the home for additional storage
-  Primary bedroom with ensuite bathroom and walk-in closet
-  Large front porch
-  Detached two-car garage (not shown on plan)
-  Optional fireplace
-  Optional private deck from primary bedroom
-  Optional Accessory Dwelling Unit (not shown on plan)



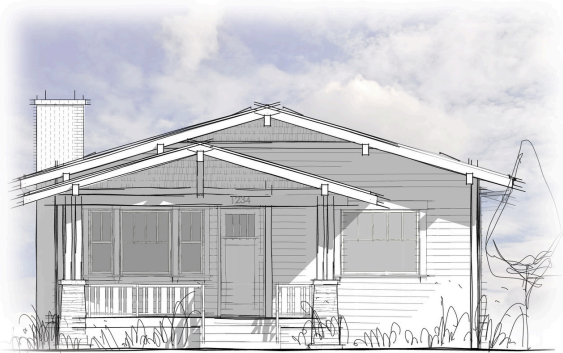
www.genesisbuildersla.com



Mediterranean Revival



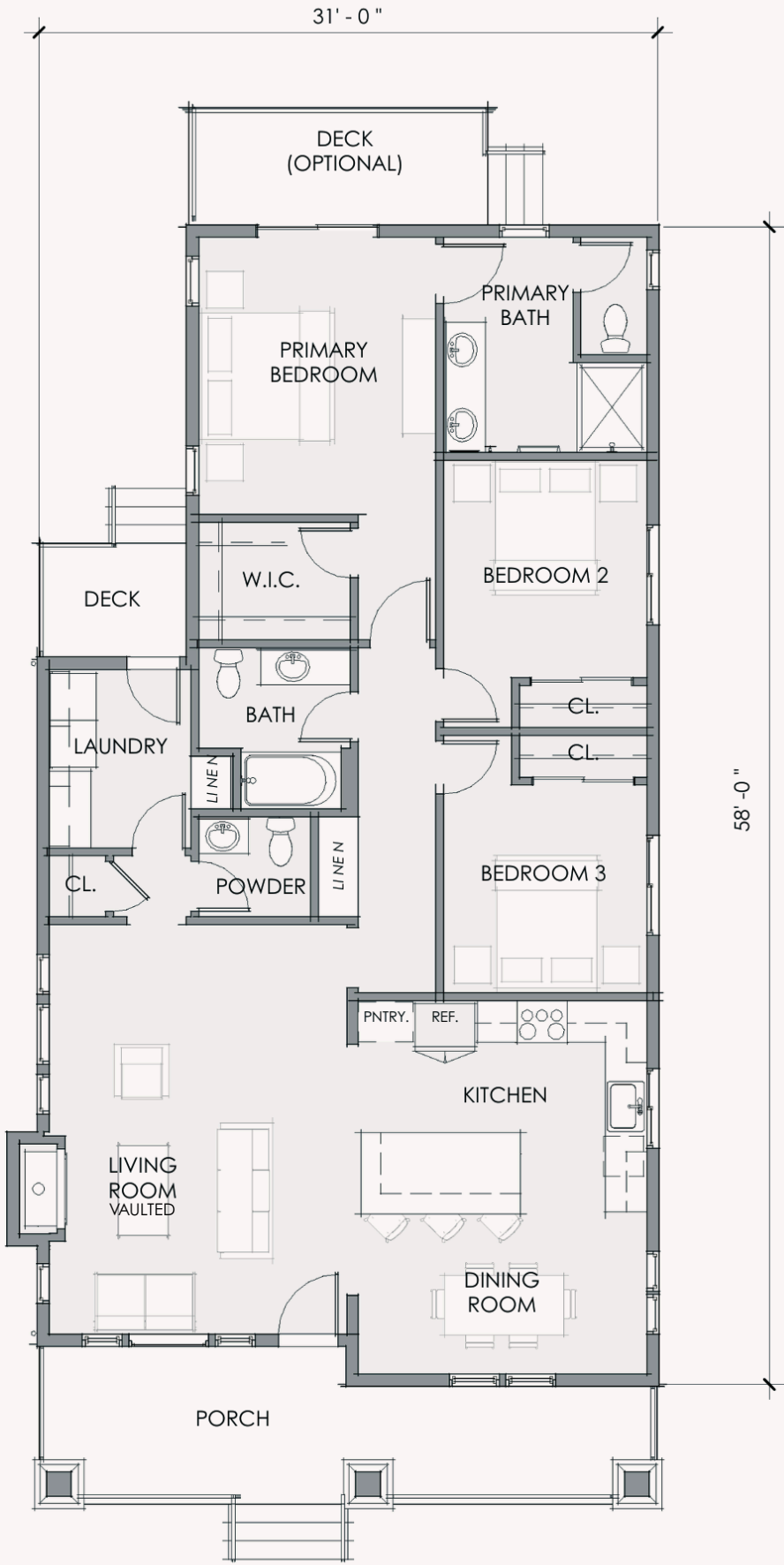
SoCal Traditional



Foothill Craftsman



California Bungalow



Room size, walls, windows, doors, porches, decks, ceiling height vary per home location and elevation.  
Plans subject to change without notice.

Genesis Builders homes meet the Los Angeles County Residential Design Standards (RDS) Ordinance and satisfy The Altadena Community Standards District requirements.












Genesis Builders Inc operates under the Montage Development Inc. CSLB #738938.  
Expires on August 31, 2025.

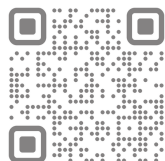


# Residence 3

1750 sf | 4 Bedrooms | 2.5 Baths

## Home Features:

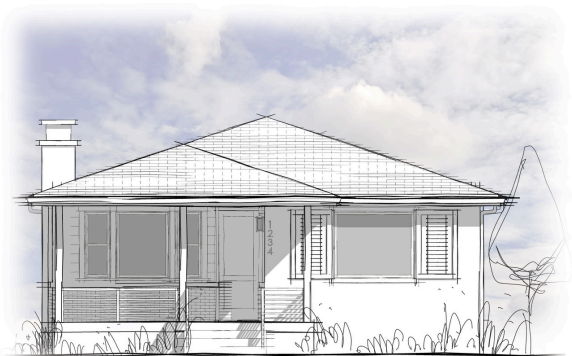
-  Single-story open floor plan
-  Vaulted ceiling in living room
-  Kitchen with pantry, desk, and island with counter seating
-  Spacious laundry room
-  Closets throughout the home for additional storage
-  Primary bedroom with ensuite bathroom and walk-in closet
-  Large front porch
-  Detached two-car garage (not shown on plan)
-  Optional fireplace
-  Optional private deck from primary bedroom
-  Optional Accessory Dwelling Unit (not shown on plan)



www.genesisbuildersla.com



Mediterranean Revival



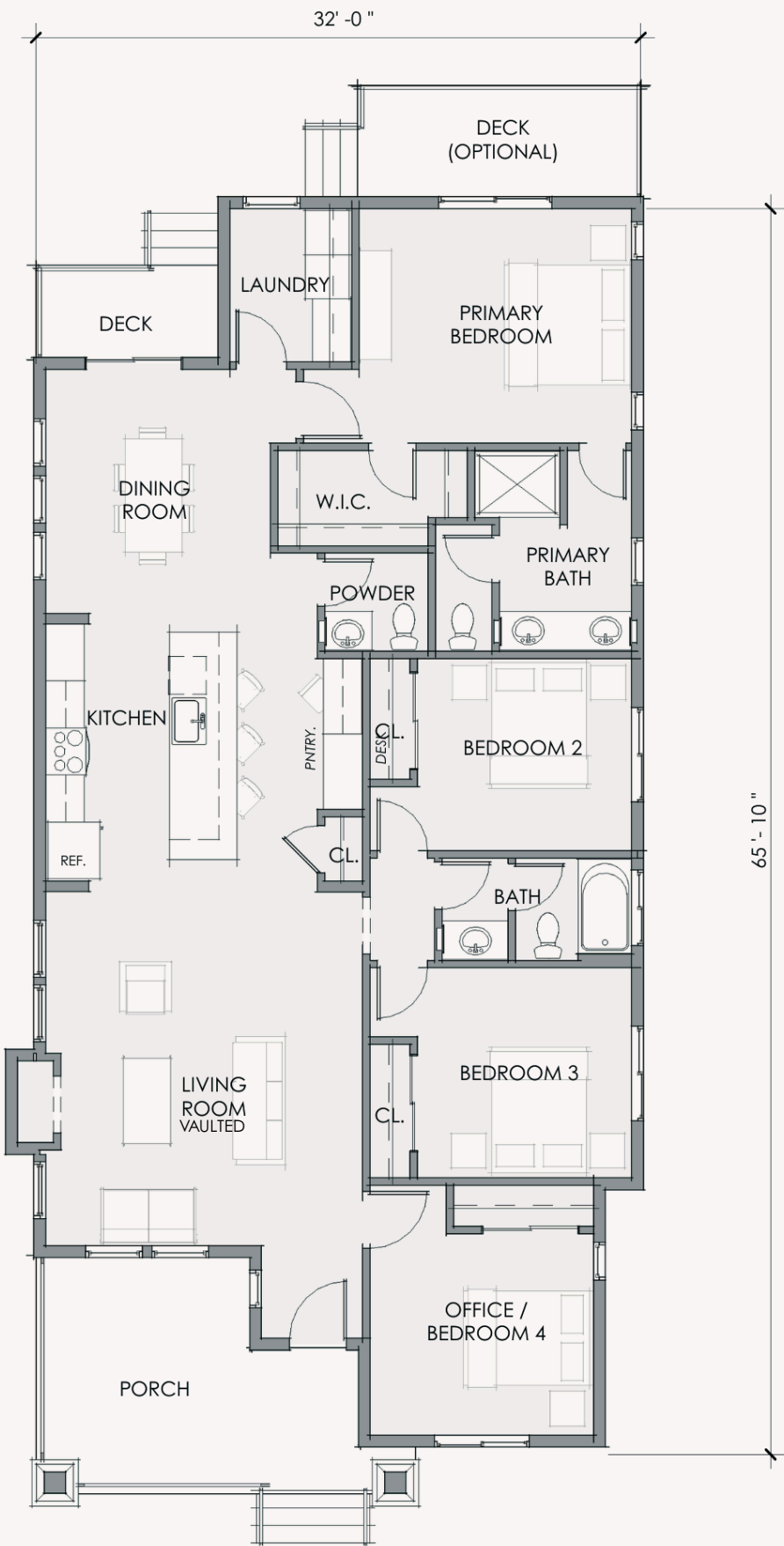
SoCal Traditional



Foothill Craftsman



California Bungalow



Room size, walls, windows, doors, porches, decks, ceiling height vary per home location and elevation.  
Plans subject to change without notice.



Genesis Builders homes meet the Los Angeles County Residential Design Standards (RDS) Ordinance and satisfy The Altadena Community Standards District requirements.

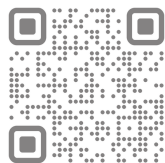
Genesis Builders Inc operates under the Montage Development Inc. CSLB #738938.  
Expires on August 31, 2025.

# Residence 4

1750 sf | 3 Bedrooms | 2.5 Baths

### Home Features:

-  Two-story open floor plan
-  Kitchen with pantry, desk, and island with counter seating
-  Spacious laundry room
-  Closets throughout the home for additional storage
-  Primary bedroom with ensuite bathroom and walk-in closet
-  Large front porch
-  Detached two-car garage (not shown on plan)
-  Optional fireplace
-  Optional Accessory Dwelling Unit (not shown on plan)



www.genesisbuildersla.com



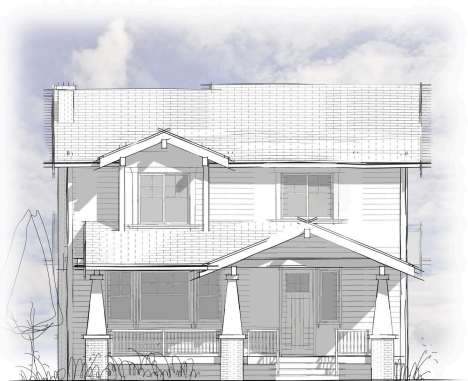
Mediterranean Revival



SoCal Traditional

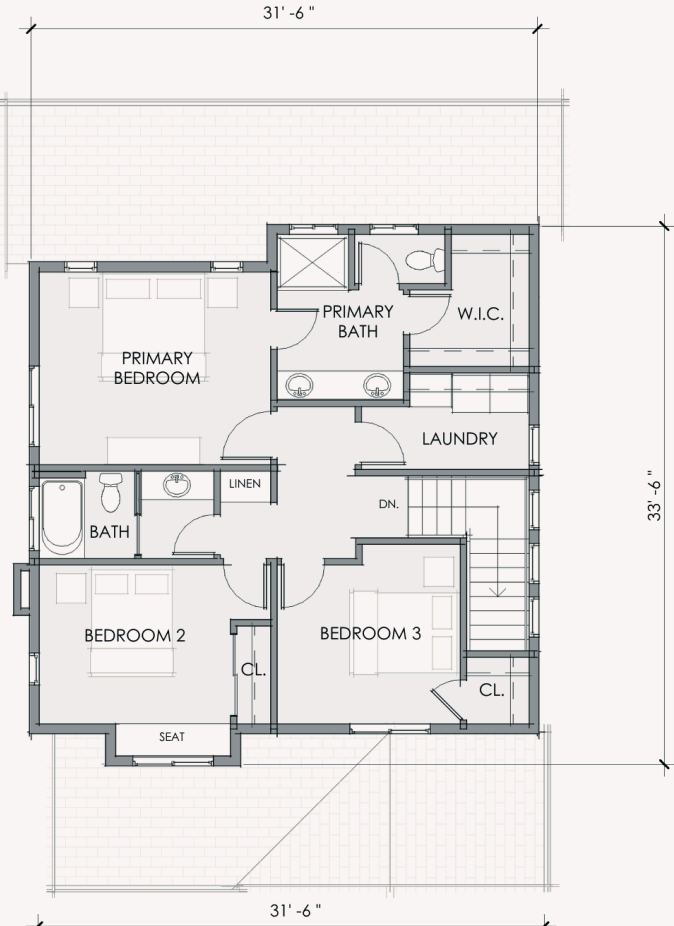


Foothill Craftsman

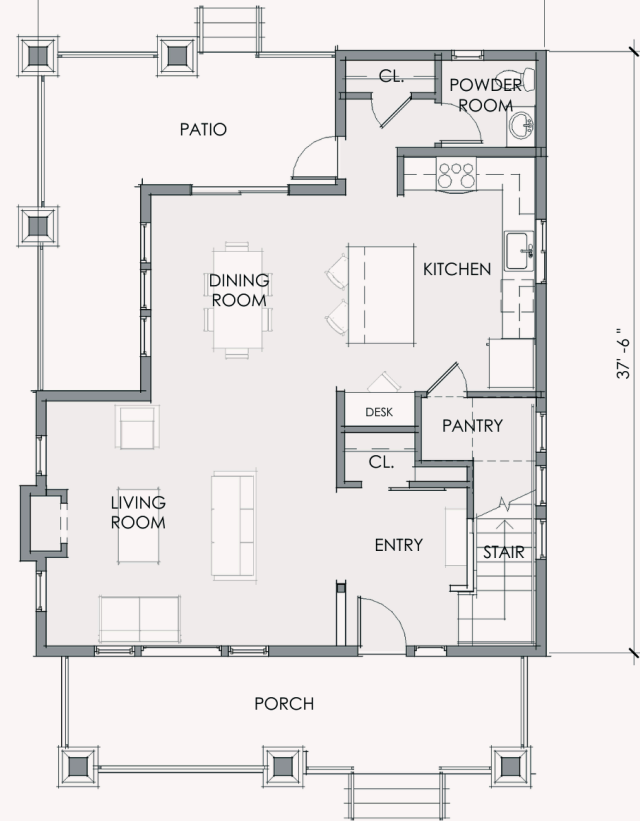


California Bungalow

L2.



L1.



Room size, walls, windows, doors, porches, decks, ceiling height vary per home location and elevation.  
Plans subject to change without notice.

Genesis Builders homes meet the Los Angeles County Residential Design Standards (RDS) Ordinance and satisfy The Altadena Community Standards District requirements.











Genesis Builders Inc operates under the Montage Development Inc. CSLB #738938.  
Expires on August 31, 2025.

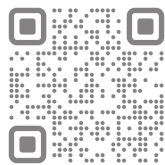


# Residence 5

2000 sf | 4 Bedrooms | 2.5 Baths

## Home Features:

-  Two-story open floor plan
-  Kitchen with pantry and island with counter seating
-  Spacious laundry room
-  Closets throughout the home for additional storage
-  Primary bedroom with ensuite bathroom and walk-in closet
-  Large front porch
-  Detached two-car garage (not shown on plan)
-  Optional fireplace
-  Optional private deck from primary bedroom
-  Optional Accessory Dwelling Unit (not shown on plan)



www.genesisbuildersla.com



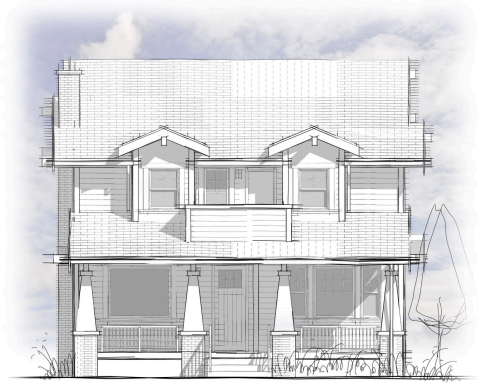
Mediterranean Revival



SoCal Traditional

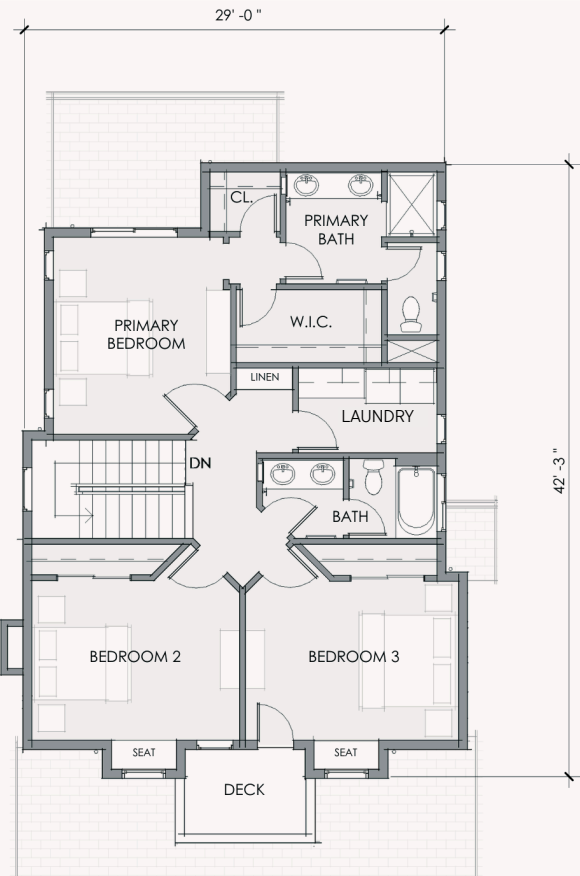


Foothill Craftsman

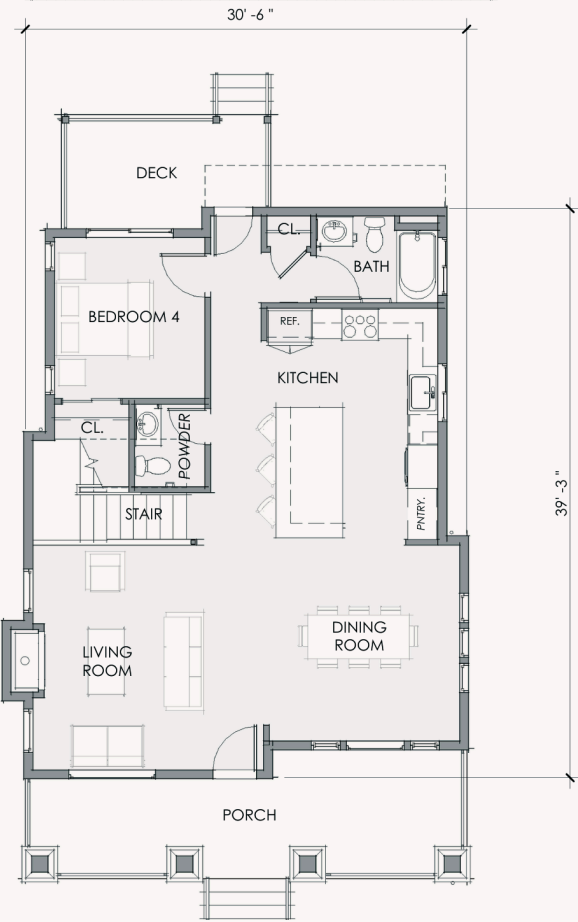


California Bungalow

L2.



L1.



Room size, walls, windows, doors, porches, decks, ceiling height vary per home location and elevation.  
Plans subject to change without notice.










Genesis Builders homes meet the Los Angeles County Residential Design Standards (RDS) Ordinance and satisfy The Altadena Community Standards District requirements.

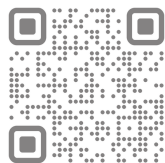
Genesis Builders Inc operates under the Montage Development Inc. CSLB #738938.  
Expires on August 31, 2025.

# Residence 6

2200 sf | 4 Bedrooms | 3 Baths

### Home Features:

-  Two-story open floor plan
-  Kitchen with pantry, desk, and island with counter seating
-  Spacious laundry room
-  Closets throughout the home for additional storage
-  Primary bedroom with ensuite bathroom and walk-in closet
-  Large front porch
-  Detached two-car garage (not shown on plan)
-  Optional fireplace
-  Optional Accessory Dwelling Unit (not shown on plan)



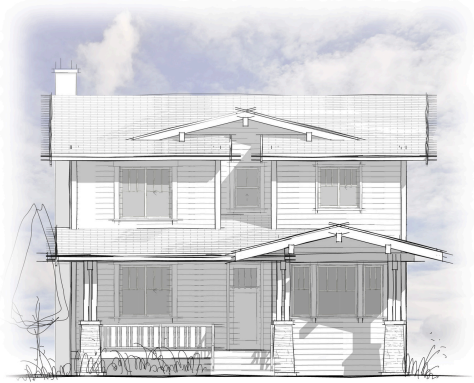
www.genesisbuildersla.com



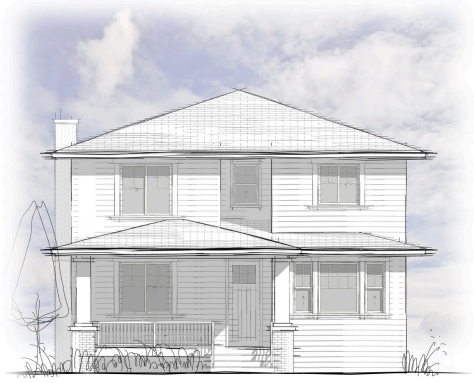
Mediterranean Revival



SoCal Traditional

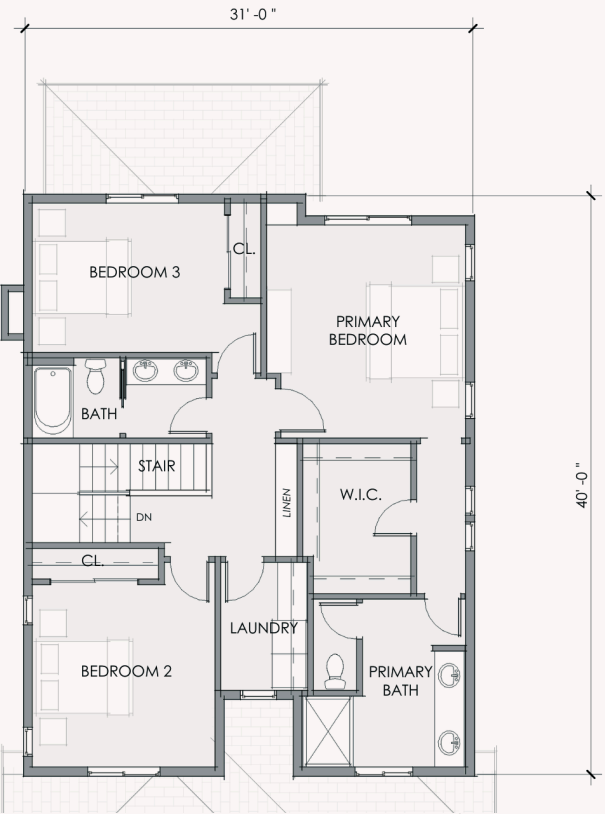


Foothill Craftsman

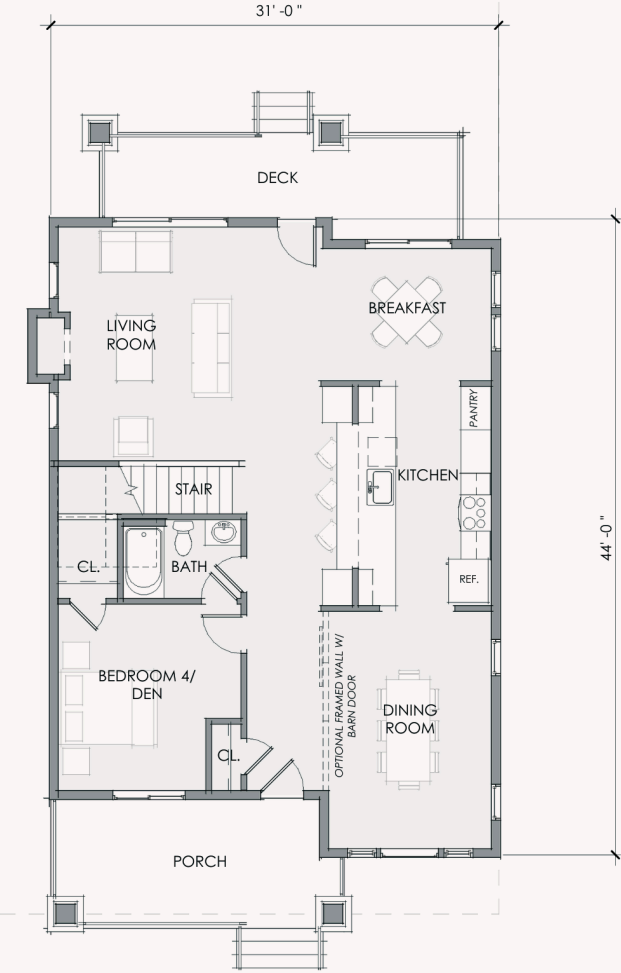


California Bungalow

L2.



L1.



Room size, walls, windows, doors, porches, decks, ceiling height vary per home location and elevation.  
Plans subject to change without notice.  
Genesis Builders homes meet the Los Angeles County Residential Design Standards (RDS) Ordinance and satisfy The Altadena Community Standards District requirements.  
Genesis Builders Inc operates under the Montage Development Inc. CSLB #738938.  
Expires on August 31, 2025.